



Lune Habitat Group

The Lune Habitat Group is an unincorporated, environmental body consisting of volunteers dedicated to the protection and improvement of the Lune Catchment. The Wenning is an important and beautiful tributary of the Lune supporting stocks of brown trout, salmon and sea trout. Over the past few years the Group has spent over £30,000 creating riverine habitat zones at Riverside Caravan Park near Bentham, at Staggarth and between Greystonegill Bridge and the confluence with Keasden Beck (part-funded by the Forest of Bowland Sustainable Development Fund). These habitat zones help the river's fish stocks by reducing pollution and by increasing available food and shelter.

For further information, contact the secretary of the Lune Habitat Group. Sarah Littlefield, on 01524 222174



Ribble Catchment Conservation Trust

The Ribble Catchment Conservation Trust is a local environment habitat group set up to help the rivers and streams of the Ribble Catchment to recover their former condition and provide self sustaining fish stocks once more. The Ribble Catchment covers more than half of the AONB.

The picture shows the construction of the off-stream spawning channels on the River Dunsop. Completed last year, they were designed to provide new spawning areas for sea trout and salmon, which have lost most of the original spawning grounds on the main river. Both trout and salmon used the channels last year.

For further information contact Stephen Hatton, the Habitat Project Manager 01200 444452 www.ribbletrust.org.uk



A Bank House Fly Fishery

2 1/2 acre water designed with fly-fishing and wildlife in mind. 12 small islands are scattered over the water giving the fishery a network of swims and pools, rich in both aquatic and terrestrial insect life. Fishing lodge with tackle hire and tuition available and with big rainbow, blue, brown and tiger trouts on the prowl you never know what you might catch.

Low Mill, Caton, Nr Lancaster LA2 9HX
web: www.stocksreservoir.com
tel: 01524 770412



B Barnsfold Water

Barnsfold Water Trout Fishery is situated in the shadow of Beacon Fell Country Park and is approximately 6 miles from junction 32 on the M6. Two lakes – Barns and Beacon – each about 11 acres, offer excellent bank fishing. Facilities include boat hire, toilets, tackle shop and hire. Casting tuition is available.

Barns Lane, Goosnargh PR3 2NJ
web: www.barnsfoldwaters.co.uk
tel: 01995 61583
email: jfcasson@hotmail.com

C Cleveley Mere Fishing Lodges

The "Sports Facility of the Year 2005", a beautiful 23-acre lake surrounded by fields and woodland set in a private nature reserve in the Wyre valley. Offering rainbow and trout fly-fishing from boat or bank. Day tickets available. 3 self-catering lodges, sleeping up to 6, are available for weekly or short break hire.

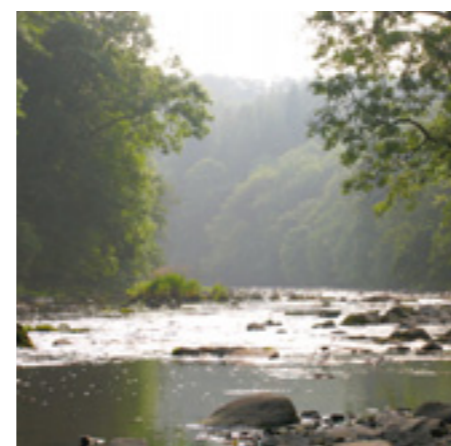
Cleveley Bank Lane, Forton PR3 1BY
web: www.cleveleymere.com
tel: 01524 793644
email: bookings@cleveleymere.com



G Slaidburn (King – Wilkinson) Estate

Fishing is available on a 2 1/2 mile stretch on the River Hodder at Slaidburn on specified banks between Hammerton Hall and Great Dunnow. Full details are available at the Central Stores in Slaidburn – opening times Mon-Fri 8.00 to 17.30, Sat 8.30 to 17.00, Sun 9.00 to 12.00. Daily, weekly or seasonal tickets.

Central Stores and Post Office, Slaidburn BB7 3ER
tel: 01200 446268



H Red Pump Inn

This traditional country Inn in the Bowland countryside offers excellent local produce in the restaurant, superb ales in the bar; three beautifully appointed 4-star guest rooms and exclusive fishing on the River Hodder (grayling, trout and salmon) for residents.

Clitheroe Road, Bashall Eaves BB7 3DA
web: www.theredpumpinn.co.uk
tel: 01254 826227

I Riverside Caravan Park

Riverside Caravan Park is a secluded park on the banks of the River Wenning, set in a delightful part of the countryside. Daily, weekly and seasonal permits for the private stretch on the River Wenning are available from reception. We also have two self-catering holiday cottages.

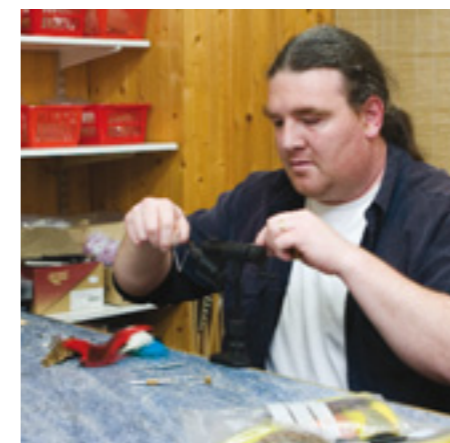
High Bentham, Lancaster LA2 7FJ
web: www.riversidecaravanpark.co.uk
tel: 01524 261272 or 07711 587 428 or 015242 62835
email: info@riversidecaravanpark.co.uk



D Dales Anglers

Angling supplies for fly fishing and coarse, including weights, hooks, nets, lines, reels and general accessories. Mepps, flying C's and flies made in-shop to your specifications. Weekly permits are available for the River Wenning. Helpful staff with local knowledge. Call in at the back of Slipped Disc record shop to see us!

1 Grove Cottage, 44A Main Street, Bentham LA2 7HN
tel: 01524 261612



E Forrest Hills

The spring fed fly-fishing lake extends to 4 acres and is regularly stocked with top quality rainbow trout from 2lbs to 5lbs. The idyllic surroundings and mixture of deep basins and shallow margins provide a rich abundance of fly life, giving ample imitation opportunities for the true fisherman.

Hazelrigg Lane, Ellele, Lancaster LA2 0PL
web: www.forresthills.co.uk
tel: 01524 752566 or 07941 473469
email: colin@forresthills.co.uk

F Inn at Whitewell

The Inn at Whitewell sits high on the banks of the River Hodder, a beautiful 17th century coaching Inn with 23 bedrooms (plenty with four posters) and wonderful peat fires. Recognised by the AA as a 5-star Inn and by the Good food Guide for its excellent foods. Guests can fish the five miles of the Hodder for trout, sea trout and salmon.

Whitewell, Near Clitheroe BB7 3AT
web: www.innatwhitewell.com
tel: 01200 448222
email: reception@innatwhitewell.com



J Stocks Reservoir

The largest fly fishery in the North West and lying within the AONB, Stocks has a wild, unspoiled quality. 25 boats fitted with petrol outboards. Tuition and guiding available. Lodge open from 8am until dusk, with a member of the team on duty to offer help and advice. Well-stocked tackle shop and café.

Catlow Road, Slaidburn BB7 3AQ
web: www.stocksreservoir.com
tel: 01200 446602



K Wyresdale Park

Boat and jetty fishing on a mature 16-acre lake established in the 1980s on the privately owned Wyresdale Park estate. Annual stocking of rainbow trout and there is a programme to introduce brown trout. Applications for seasonal rods and guest days. Introductory days and tuition available.

Snowhill Lane, Scorton PR3 1BA
tel: 01524 791874

L Wyreside Lakes

A beautiful award-winning haven of fishing lakes and nature trails covering 120 acres. A mixture of carp, pike and coarse fishing, offering a variety of species and size – a challenge to both the professional and novice angler. All combined with a 4-star rated caravan and camping site makes it a number one fishing and holiday venue.

Sunnyside Farmhouse, Bay Horse, Lancaster LA2 9DG
web: www.wyresidelakes.co.uk
tel: 01524 792093
email: Wyreside2003@yahoo.co.uk



A diverse range of fishing localities in and around the Forest of Bowland AONB

FISHING IN BOWLAND



Forest of Bowland AONB, Environment Directorate, PO Box 9, Guild House, Cross Street, Preston, PR1 8RD
Tel: 01772 531473 Fax: 01772 533423
E-mail: bowland@env.lancsc.gov.uk www.forestofbowland.com

All those enjoying the Forest of Bowland AONB are asked to follow the Countryside Code (www.countrysideaccess.gov.uk) and adhere to signs, particularly during sensitive times such as lambing and bird nesting season (spring and summer).

For accommodation, places to visit and things to do, contact Tourist Information

Bowland Visitor Centre Beacon Fell Country Park. Tel: 01995 640557
Barnoldswick TIC Station Road, Barnoldswick. Tel: 01282 666704
Bentham TIC/TIP Town Hall, Station Road. Tel: 015242 62549/61030
Clitheroe TIC Ribble Valley BC Offices, Church Walk. Tel: 01200 425566
Garstang TIC High Street. Tel: 01995 602125
Kirkby Lonsdale TIC 24 Main Street. Tel: 015242 71437
Lancaster TIC 29 Castle Hill. Tel: 01524 32878
Pendle Heritage Centre Barrowford. Tel: 01282 661701
Preston TIC The Guild Hall. Tel: 01772 253731
Settle TIC Town Hall, Settle. Tel: 01729 825192
Lancashire Tourist Board 01257 226600, www.visitlancashire.com
Yorkshire Tourist Board www.yorkshire.com

For Countryside and Ranger Services contact Lancashire Countryside Service/Ranger Service 01772 534709.
Wyre Countryside Service/Ranger Service 01995 606654.

Ordnance Survey Map Explorer OL41, Forest of Bowland & Ribblesdale

Front cover photograph © Graham Cooper, www.forestofbowlandimages.com. Other photographs: © Graham Cooper, www.forestofbowlandimages.com, © Charlie Hedley/Natural England, and those supplied by businesses included in this leaflet. 2nd edition, September 2008.

Lancashire County Council acts as the lead authority for the Forest of Bowland AONB Advisory Committee a partnership comprising: Lancashire County Council, North Yorkshire County Council, Craven District Council, Lancaster City Council, Pendle Borough Council, Preston City Council, Ribble Valley Borough Council, Wyre Borough Council, Lancashire Association of Parish and Town Councils, Yorkshire Local Councils Association, NWDA, DEFRA, Natural England, United Utilities plc, Environment Agency, Royal Society for the Protection of Birds (RSPB), Forest of Bowland Landowning and Farmers Advisory Group and the Ramblers Association.



Leaflet available in large text format on request. Due to OS legislation the map is not available in larger format.

FOREST OF BOWLAND

Area of Outstanding Natural Beauty

The Forest of Bowland Area of Outstanding Natural Beauty (AONB) offers wonderful opportunities for quiet enjoyment such as walking, cycling, horse riding and fishing. This leaflet provides details and a location map of places to fish in, and close to, the Forest of Bowland AONB. Several of the fishing sites in this leaflet also offer a variety of accommodation, from luxury hotel, through to self-catering units and camping and caravan sites. For details of other places to stay in the Forest of Bowland, please visit our website www.forestofbowland.com

Bowland is blessed with four of the most scenic and unspoiled rivers in the country, namely the Ribble, Hodder, Wyre and Lune. All are mainly game fish orientated with salmon, sea trout and brown trout being the staple but with a growing popularity for grayling fishing, particularly on the upper Hodder.

Access for All

Some of the fishing venues can offer access for all in the form of a Trampler – an all-terrain electric wheelchair facility for access to bank side angling. This might be useful for those who may have difficulty negotiating uneven footpaths. Please ask about this when making enquiries.

Map Key

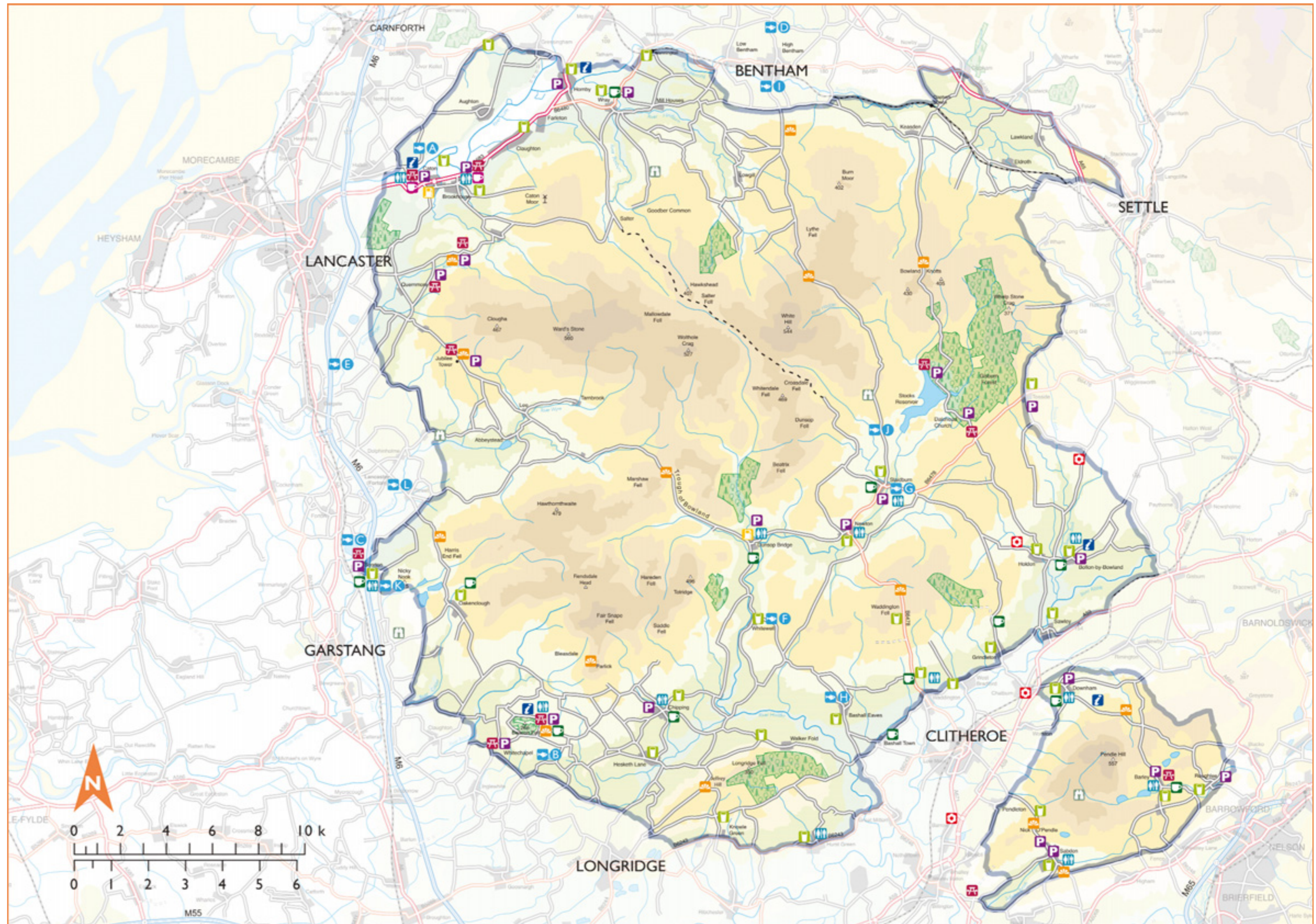
- Nurseries
- Viewpoint
- Garage
- Pub
- Birding Locations
- Café
- Toilets
- Fishing Locations
- Tourist Information
- Parking
- Picnic Site
- Slater Fell Track

Fishing Locations

- A Bank House
- B Barnsfold
- C Cleaveley Mere
- D Dales Anglers
- E Forrest Hills
- F Inn at Whitewell
- G Slaidburn Estate
- H Red Pump Inn
- I Riverside Caravan Park
- J Stocks Reservoir
- K Wyresdale Park
- L Wyresdale Lakes



FOREST OF BOWLAND
Area of Outstanding Natural Beauty



Designed and produced by mapt ltd, for Lancashire County Council. This map contains Ordnance Survey material with the permission of Ordnance Survey on behalf of the Controller of Her Majesty's Stationery Office © Crown Copyright. Unauthorised reproduction infringes Crown Copyright and may lead to prosecution or civil proceedings. Lancashire County Council Licence No. 100023320 2004. (Origination D.Jenks)

This project is funded by the Forest of Bowland Area of Outstanding Natural Beauty (AONB) and received funding from the following organisations

