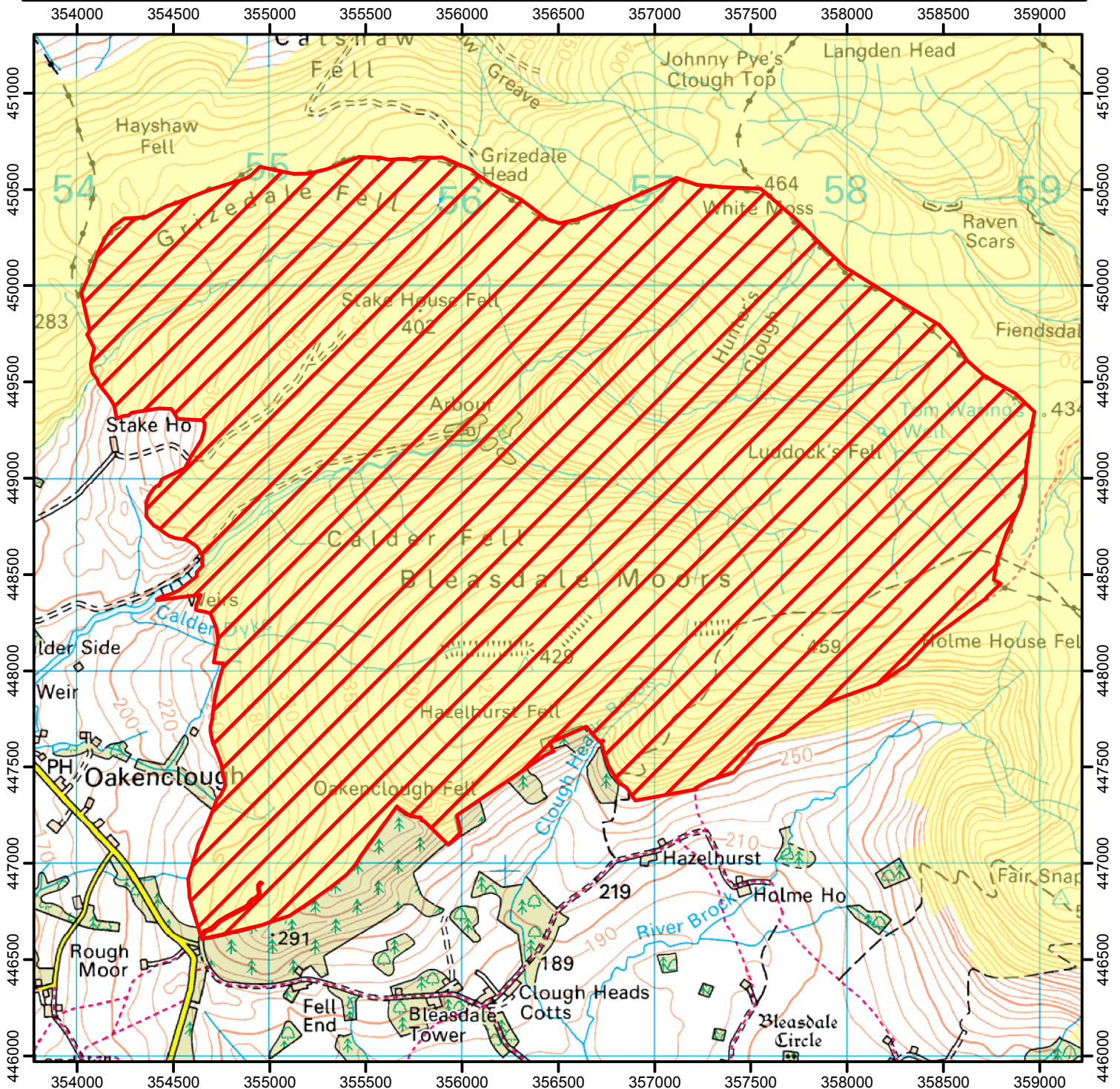


NO OPEN ACCESS

The open access land shown hatched on the map below is temporarily closed at the land manager's discretion. This does not affect Public Rights of Way.

Closed 2016: August 12th, 15th - 19th, 22nd - 26th, 30th - 31st
September 1st - 3rd

Case Number : 2016068179



0 250 500 1,000 1,500 Metres

© Crown Copyright and database right 2016. Ordnance Survey 100022021



Restricted Open Access Land



Open Access Land



For more information call the Open Access Contact Centre on 0300 060 2091
or visit our website at www.gov.uk/right-of-way-open-access-land/use-your-right-to-roam